

No. 2265-

County Lincoln

Name William Adam J

Elias Platt

Acres 200

Grant No. 1887

Issued 8<sup>th</sup> Dec 1802

Warrant No. ~~mm~~ Entry No. 1643

Entered 8<sup>th</sup> Feb. 1802

Book No. 116 Page No. 180

Location on waters of  
Maiden Creek

Remarks:

State of Carolina

CS 1643

Lincroth County } To the Surveyor of said County, greeting:

You are hereby requested as soon as may be, to lay off and survey for e Gdram William & Elias Poff, two hundred & forty

lands on the waters of Maiden Creek, joining e Gdram William

line. En P. Feb 14<sup>th</sup> 1802

Having the law made and provided for running out

lands of said State

Giveth under my Hand at Office May 12<sup>th</sup> 1802

J. Mendenhall

Adam Williams

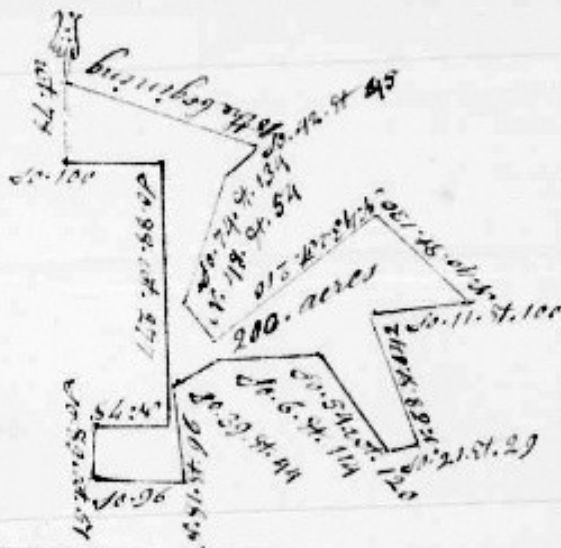
Blair & Pugh

2001 Acres

No 18881

Feb 8<sup>th</sup> 1802

Scale 100 poles per half Inch



State North Carolina  
 Lincoln County  
 Surveyed for Adam Hillian &  
 Elias Platt Two hundred acres of  
 Land on the waters of Maiden Creek  
 by virtue of a warrant No 1643 and  
 Entered February 8<sup>th</sup> 1802 Beginning at  
 a pine Patrick Sprians Corner &  
 runs with Adam Hillians Line  
 west Seventy eight poles to a Post oak  
 thence South one hundred poles to a  
 hickory thence South Eighty eight  
 west two hundred & Seventy seven  
 poles to a Black oak thence North  
 Seventy eight poles to a post oak

thence South Eighty nine west fifty one poles to a Maple in a branch  
 Heavels Corner thence South Sixty six poles to a Black oak Bollingers  
 Corner thence with said Line North Eighty one East Sixty six poles to  
 a post oak Bollingers Corner thence South Thirty nine East forty four  
 poles to a Post oak Bollingers Corner thence South six East one hund  
 red and fourteen poles to a Spanish oak thence South fifty four west  
 one hundred & Twenty poles to a Post oak thence South Twenty one East  
 Twenty nine poles to a Chesnut in west Line thence with said Line  
 North Sixty eight East one hundred & forty two poles to a pine in west  
 Corner thence South Eleven East one hundred poles to a post oak on  
 George platts Line thence North forty east one hundred & thirty poles to  
 a Stake thence North forty three west two hundred & ten poles to a  
 post oak Elias platts Beginning Corner thence North forty eight East fifty  
 four poles to a Spanish oak Sprians Corner thence South Seventy four  
 East one hundred & Thirty four poles to a Stake thence South forty  
 two East forty five poles to a Stake thence to the Beginning

September 28<sup>th</sup> 1802.  
 George Glattfelder }  
 David Hillian } C. B.

John Yoder D. S.  
 Jas. Smith

North-Carolina,

Comptroler's Office. *No 3218702*

It appears from a Receipt of the Treasurer lodged in this Office, that  
*Adam Williams* has paid the Purchase-Money  
for an Entry of Land of *Two hundred* Acres in the  
County of *Lenox* which Entry is No, *1643*

*A. Craven Comptroler*